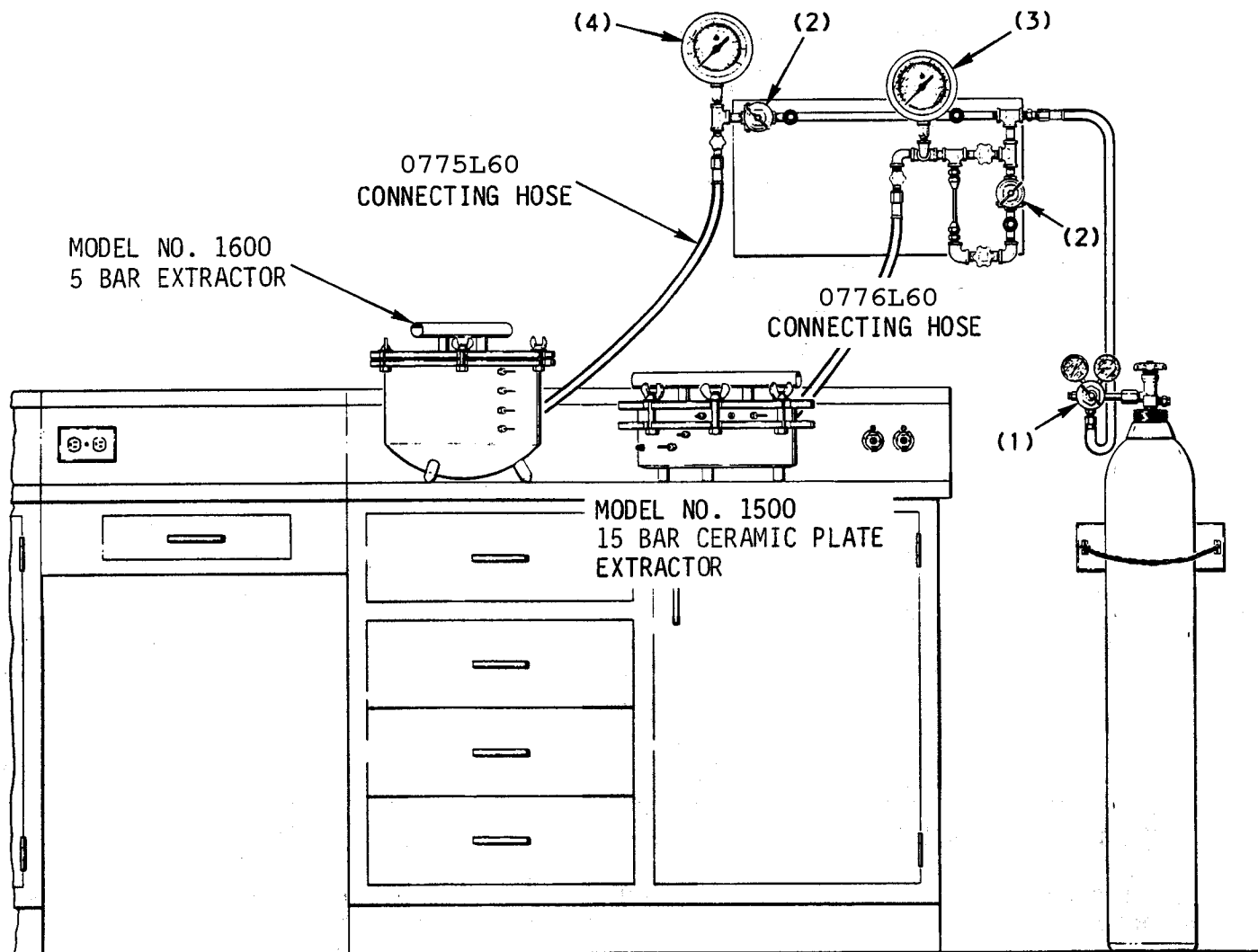


# LAB 523

## LABORATORY SET-UP

750-23 MANIFOLD WITH MODEL NO. 1500 AND MODEL NO. 1600 PRESSURE EXTRACTORS



MODEL NO. 750-23 MANIFOLD, INCORPORATING:

- (1) 767P0500G1 REGULATOR
  - (2) 766P0125 REGULATOR, TWO
  - (3) 780P0300 0-300 PSI TEST GAUGE
  - (4) 780P0060 0-60 PSI TEST GAUGE
- ALL NECESSARY VALVES AND FITTINGS

LABORATORY SETUP FOR MODEL NO. 1600 5 BAR EXTRACTOR AND MODEL NO. 1500 15 BAR CERAMIC PLATE EXTRACTOR OPERATING INDEPENDENTLY WITH TANK OF NITROGEN AS PRESSURE SOURCE.

### SOILMOISTURE EQUIPMENT CORP.

P.O. Box 30025, Santa Barbara, CA 93130 USA

Phone: 805-964-3525 - Fax: 805-683-2189 - Email: [sales@soilmoisture.com](mailto:sales@soilmoisture.com)

Website: <http://www.soilmoisture.com>



---

EQUIPMENT LIST WITH NORMAL ACCESSORIES:

1	1500	15 BAR CERAMIC PLATE EXTRACTOR
1	1080G1	PM HINGE
1	1081	ADAPTER PLATE
1	0775L60	CONNECTING HOSE
4	1093	SOIL SAMPLE RETAINING RINGS, per dz.
1	1600G1	5 BAR PRESSURE PLATE EXTRACTOR WITH <b>FOUR</b> <b>0675B01M1</b> 1 BAR PRESSURE PLATE CELLS
4		3 BAR PRESSURE PLATE CELL
1	0776L60	CONNECTING HOSE
1	0750CG23	MANIFOLD

ORDERING INFORMATION:

When ordering, please specify the Model No. below

LAB 523      Laboratory Set-up

---

**ADDRESS ORDERS TO:**

**SOILMOISTURE EQUIPMENT CORP.**

P.O. Box 30025  
Santa Barbara, CA 93105 U.S.A.

*Telephone:*  
Area Code 805 964-3525

*Cable Address:*  
Soilcorp

*Telex:*  
Telex No. 65-8424

*Plant and Office Location:*  
801 South Kellogg Ave.  
Goleta, CA 93117

All prices are in U.S. Dollars, F.O.B. Santa Barbara, California, U.S.A.  
— Subject to change without notice.

On Export Orders we are prepared to handle details of export packing and forwarding and will submit Proforma Invoices covering all costs delivered, upon receipt of detailed requirements.

